

Synchronized Time Products

Impulse Correction Clocks

6310-9075/2310-9072

UL Listed
CSA Certified

STANDARD FEATURES:

- Attractive, Modern Design
- Hour/Minute Hands
- 12" Round and Square Models
- Individual Automatic Supervision with Hourly Correction
- Surface (6310 Model Only) or Semi-Flush Mounted
- Simple Hookup and Installation
- Easily Maintained and Serviced

OPTIONAL FEATURES:

- Double-Dial Round Bracket
- Double-Dial Square Bracket

DESCRIPTION:

Simplex Impulse Clocks can be used in all types of applications, from small offices to large-scale industrial sites. Clocks are available in round and square models, and both have a width of 12".

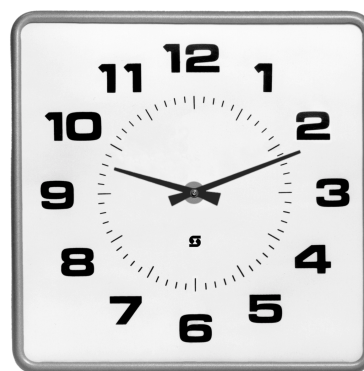
Simplex Impulse Clocks are driven by a compact ratchet drive movement that responds to an electrical impulse sent from the Master Clock each minute. Impulse clocks are individually checked for agreement with the Master Clock once each hour, providing uniform and accurate time. Any clock not synchronized with the Master Clock will be automatically advanced or retarded as required.

During power outages, the Master Clock accumulates the time, and when power is restored, automatically advances all system clocks to the correct time.

Impulse clocks connect to 2- or 3-wire parallel circuits. With the 3-wire circuit, one wire is used for the rapid impulses; with the 2-wire circuit, polarity reversal is used. Correction range is 59 minutes slow and 10 minutes fast.



6310-9075



2310-9072

Specifications

Power Requirements	24 VDC, .034 A
Environmental Limitations	32° F to 120° F (0° C to 40° C)
Humidity	95%, non-condensing

WIRING:

Wiring size and type varies greatly, depending on correction type, voltage used, quantity of clocks, cable distance, local codes, and National Electrical Code Class I requirements. Your local Simplex Sales Representative is equipped to assist you with complete clock system design services and wiring specifications.

MOUNTING:

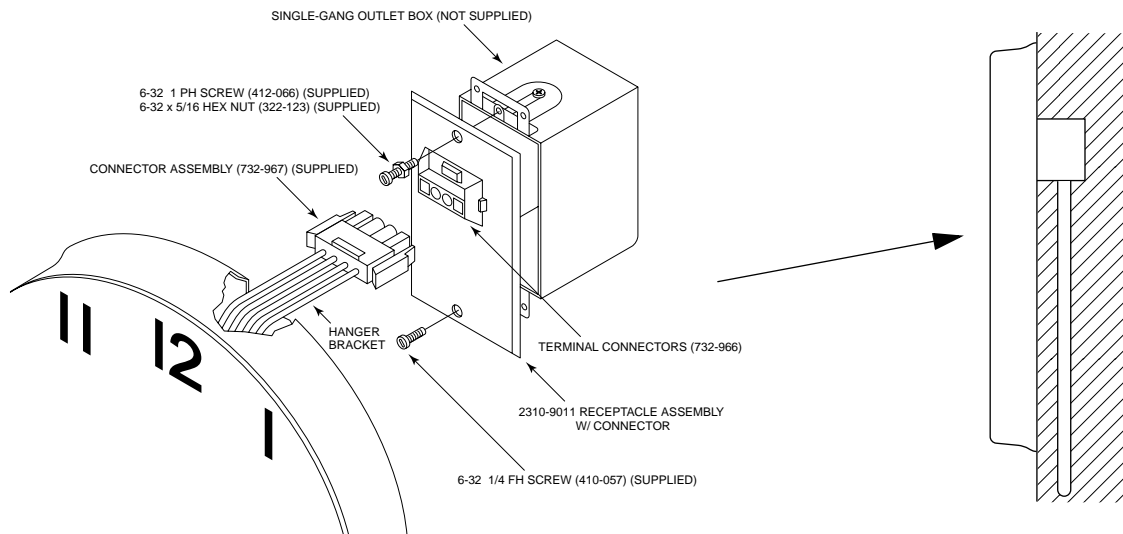
Mounting Specifications				
PID	Surface Mounting	Semi-Flush Mounting	Dimensions	Case Color
6310-9075	YES	YES	12" ROUND	BLACK
2310-9072	YES	YES*	12" SQUARE	LIGHT GRAY

*Order 2310-9825 Trim Ring Conversion Kit

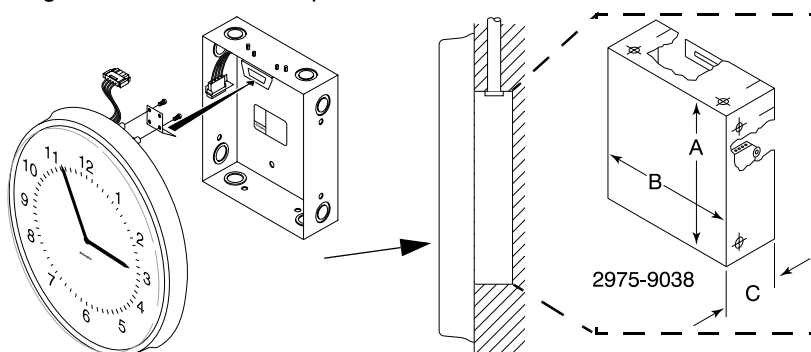
A note about 6310-9075: Surface and semi-flush mounting appear identical on the outside. The only difference between the two mounting styles is the back box used: a 2975-9038 Back Box is used for semi-flush mounting, while a single-gang box (not furnished by Simplex) is used for surface mounting.

All impulse clocks are provided with the 2310-9013 Simplex Style Plug, which is used for power and correction in both semi-flush and surface mount applications.

Surface Mounting: The 6310-9075 Impulse Clock can be surface mounted by using the 2310-9011 Receptacle Assembly as shown below.



Semi-Flush Mounting (Retrofit only): The 2975-9038 Back Box is used for semi-flush mounting. Semi-flush mounting for the 2310-9072 Impulse Clock is shown below.



2975-9038 Back Box Dimensions		
A	B	C
9 1/8"	8 1/8"	2 5/16"

Simplex and the Simplex logo are registered trademarks of Simplex Time Recorder Co. in the U.S. and/or other countries.

© 2000 Simplex Time Recorder Co. All rights reserved.

S6310-9075-2 5/00

Westminster, Massachusetts 01441-0001 USA www.simplexnet.com

All specifications and other information shown were current as of printing and are subject to change without notice.