



Model # U54BAAA333

(Not to be used with Simplex old style dual dial brackets)

FEATURES

- **3 Year Warranty**
- Microprocessor controlled movement
- 15 minutes of backup power (no batteries required)
- Accuracy to within ± 1 second of a master clock
- Reduced power consumption
- Attractive modern design
- Impact-resistant black plastic case
- Shatter-resistant polycarbonate crystal
- Diagnostic LED

DESCRIPTION

The **Life Safety Consultants solid state circuit movement replacement** clocks are provided in **round only** high impact black plastic cases with clear polycarbonate crystals and bold, black numerals and minute markers on a non-yellowing white dial. Stylish hour and minute hands are aluminum with a black finish and a red sweep hand.

The clocks are designed to work with Simplex® master clocks and correction signals. This unit is programmed to identify the signal it receives from the master and operate as that style of clock. Changing clock operation from one style to another is as easy as unplugging the clock from one system and plugging it into another. If needed, changing the placement of two small jumpers on the circuit board can change the voltage required to run this clock from 120vac to 24vac or 24vac to 120vac. This clock provides 15 minutes of backup run power without the use of batteries. If a power outage should last longer than 15 minutes, the clock will synchronize to the master clock at the hourly and 12 hour correction cycles.

COMPLIANCE

- FCC Part 15 Class B
- ICES-003



SPECIFICATIONS

- 120vac 50/60 Hz
- Current draw: 120vac, 3 watt, .028 amps

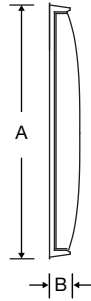
Maximum operating voltage: 120vac setting = 140vac
Minimum operating voltage: 120vac setting = 105vac

*Indicates more numbers before or after.

ORDERING INFORMATION

Part #	Description
U54BAAA333	12" Rd Flush 120vac

Flush
mount plastic



OUTSIDE DIMENSIONS

FLUSH MOUNT

SIZE	A	B
12"	13¼"	2"

At Life Safety Consultants, we continually strive to improve our products to meet our customers needs and to provide the best possible value. The above specifications are believed to be correct, are subject to change without notice and may otherwise vary from the above. Please call if you need verification of any specifications or the suitability of a particular product for a particular application.