

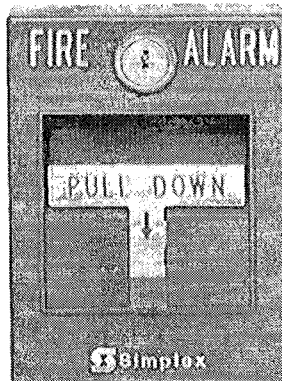


2099-9767, -9799  
**Intrinsically-Safe Fire Alarm Stations**  
**Installation and Operating Instructions**

**OPERATION OF SINGLE ACTION TYPE**

2099-9767

Pulling the handle down firmly to break the rod (visible below the handle) causes the sounding of an alarm. The front of the station must be unlocked and opened to reset the handle before the fire alarm system can be returned to normal. Replace the rod as shown in mounting drawing.

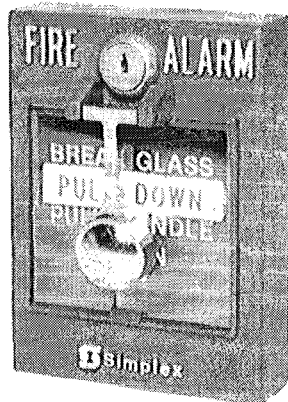


**SINGLE ACTION STATION**

**OPERATION OF GLASS DOUBLE ACTION TYPE**

2099-9799

Breaking the glass with the hammer and pulling the handle down firmly to break the rod (visible below the handle) causes the sounding of an alarm. The front of the station must be unlocked and opened to reset the handle before the fire alarm system can be returned to normal. Replace the glass plate as shown in the replacement drawing and replace the rod as shown in the mounting drawing.



**GLASS DOUBLE ACTION STATION**

**TESTING**

Notify local authorities and operate station as in an actual alarm station. After testing, replace rod (and glass plate on glass double action units), reset the station, and restore the control panel.

**APPLICATION**

The National Fire Protection Association (NFPA), Bulletin number 72, gives specific minimum requirements on this subject. When manual station coverage appears limited in any way, additional units should be installed. Stations should be mounted with the bottom of the station not less than 3-1/2 ft. (1.07M) or more than 5 feet (1.52M) from the floor. Usually stations are mounted at the 4-1/2 ft. (1.4M) level.

**Note:** In order to make building and facilities accessible to, and usable by, the physically handicapped, some specifications may require that the station be installed not more than 3-1/2 ft. (1.07M) from the floor.

Stations should be located in the normal path of exit, and distributed in the protected area so that they are unobstructed and readily accessible.

**NOTE: (ON ALL 2099 STATIONS)**  
Once installed, unlocking and opening the front of station causes an alarm.

Stations should be provided on each floor to obtain a travel distance of not more than 200 feet (60.96M) to the nearest station from any point in the building. One station should be provided for each floor where the maximum floor area is 10,000 square feet (929 sq. meters) or more. One station should be provided on the first floor and on each succeeding alternate floor if the areas to be protected are smaller than the limits as described above.

## INSTALLATION

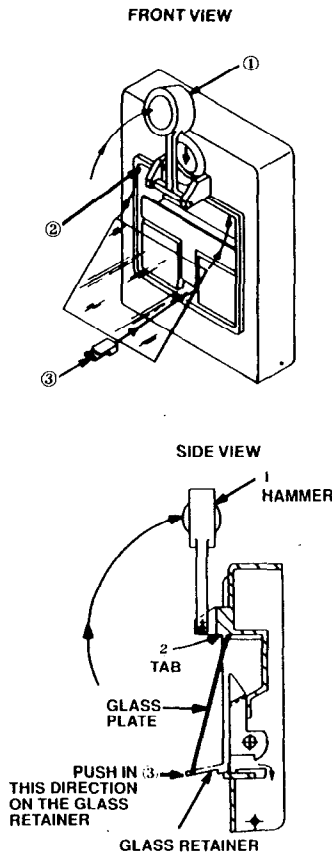
**Important:** All equipment within the hazardous area must be installed in accordance with NEC ANSI/NFPA 70 and ANSI/ISA-RP 12.6-1987.

Refer to Control Drawing #841-848 for wiring information.

## MOUNTING

For surface mounting, use a 2975-9178 red steel back box or a 2975-9022 aluminum back box. Do not substitute a box with a depth less than 2-3/16" (5.55cm).

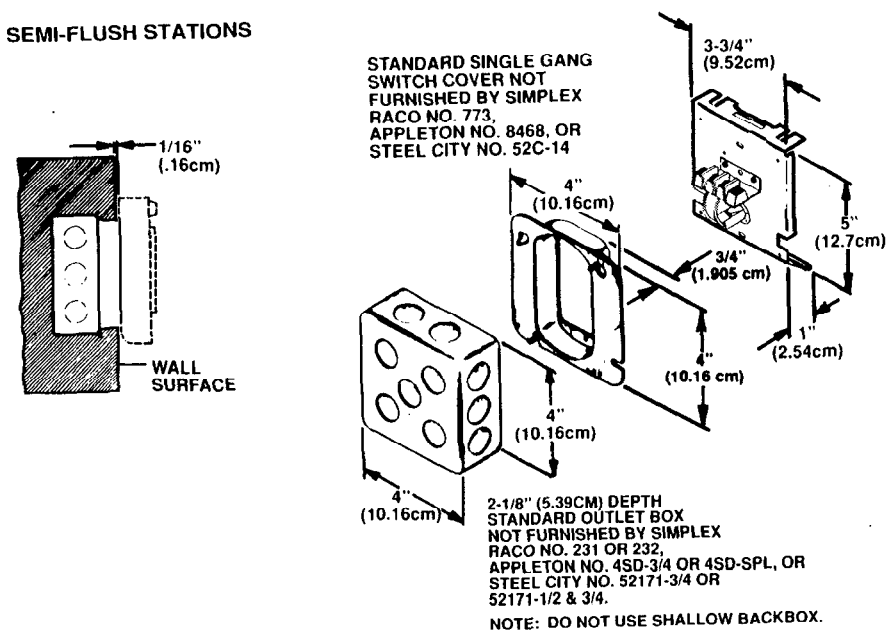
For semi-flush mounting, use a standard 4" (10.16cm) square outlet box with a minimum depth of 2-1/8" (5.39cm) fitted with a 3/4" (1.9cm) deep single gang switch cover set flush (DO NOT RECESS) or protruding 1/16" (.16cm) from the wall surface.



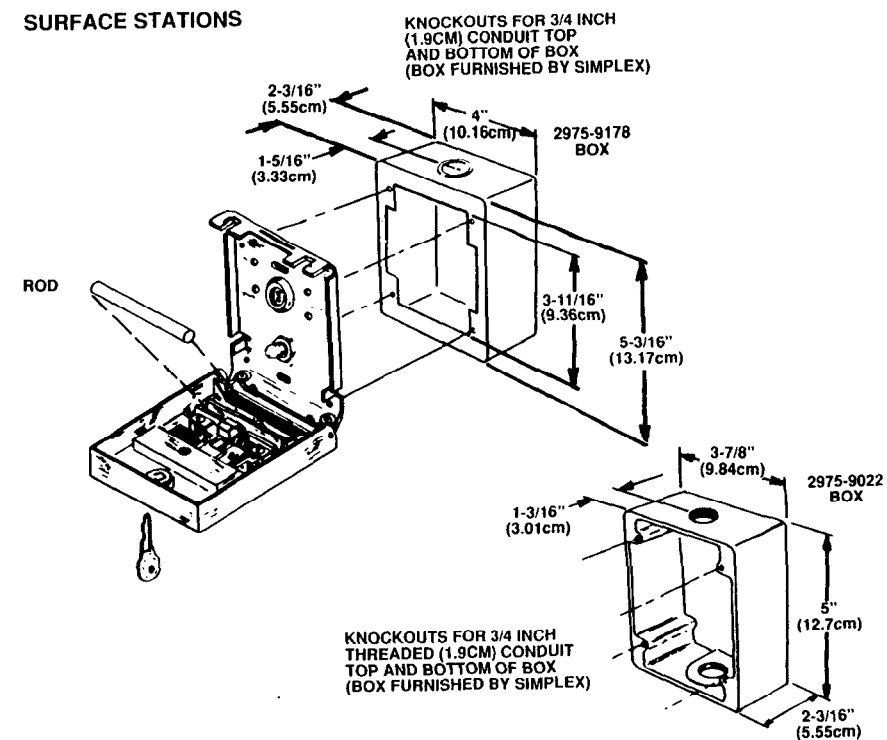
## REPLACEMENT OF GLASS PLATE ON GLASS DOUBLE ACTION TYPE 2099-9799

1. Lift hammer.
2. Fit glass under tab ②.
3. Fit glass plate into notch of glass retainer ③.
4. Push glass retainer into place.
5. Gently lower hammer.

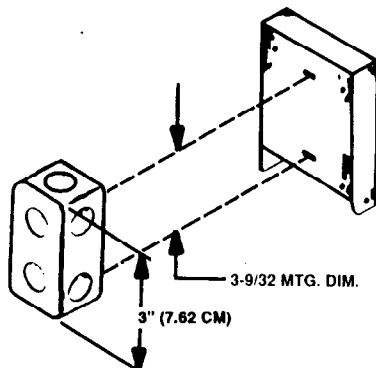
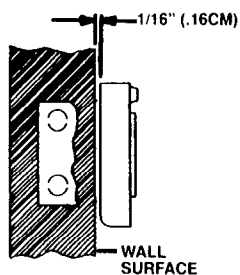
## SEMI-FLUSH STATIONS



## SURFACE STATIONS

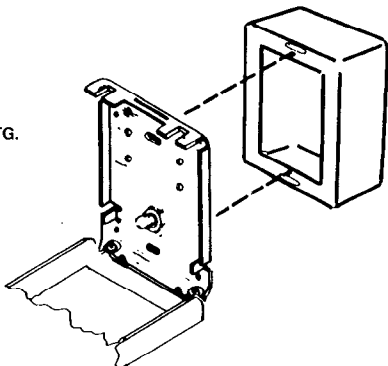


**ALTERNATE  
SEMI-FLUSH MTG.**



2-1/2" (3.65CM) DEEP SINGLE GANG  
SWITCH BOX. NOT FURNISHED BY  
SIMPLEX. RACO NO. 500,  
APPLETON NO. 222, OR STEEL  
CITY NO. CDOW.

**ALTERNATE  
SURFACE MTG.**



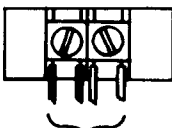
WIREMOLD  
BOX NO. B-3 (FORMERLY A-3)  
NOT FURNISHED  
BY SIMPLEX.

**WIRING**

Use no. 18 AWG minimum, No. 14 AWG maximum (TERMINAL SPEC.).

**CAUTION**

FOR SYSTEM SUPERVISION, DO NOT USE  
LOOPED WIRE UNDER TERMINALS. BREAK  
WIRE RUN TO PROVIDE SUPERVISION OF  
CONNECTIONS.

STATION TYPE	TERMINAL CONNECTIONS
2099-9767 2099-9799	 <p>General Alarm</p>