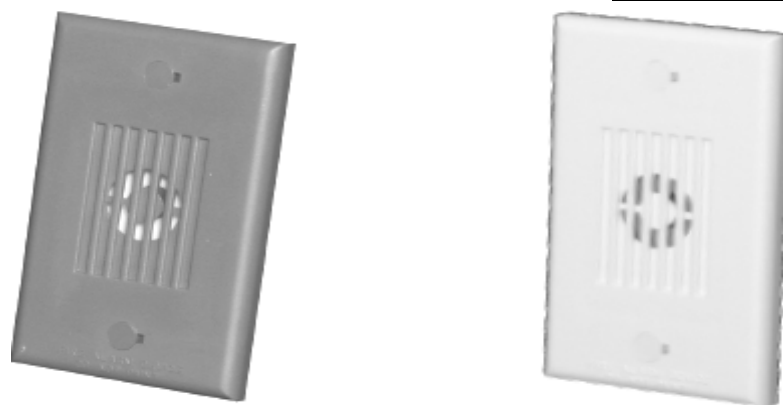


Notification Appliances

MH – Mini Horn Appliances

Application: Indoor

Product Overview

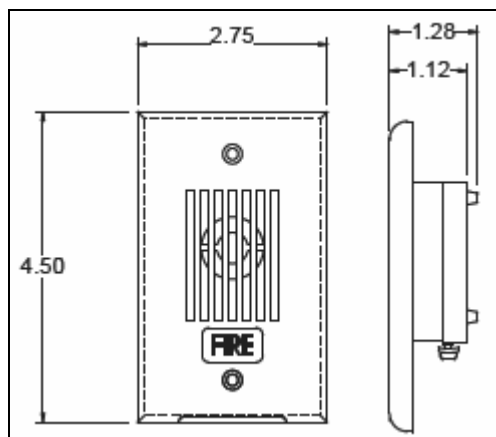
- Field-selectable settings for Temporal (Code 3) or Continuous Horn
- Siemens Series MH piezoelectric Mini Horns are compact electronic alarm appliances that are listed under **UL** Standard 464 for Audible Appliances in Public Mode Fire Protection Systems
- Can be synchronized using the Siemens DSC sync modules, FS-250 panel, XLS panel, or PAD-3 power supply with built-in sync protocol
- Designed to meet or exceed NFPA / ANSI standards
- Convenient mounting to any standard single-gang box
- Plugs to cover mounting screws
- No additional trim plate required for flush mounting
- Fast installation with In / Out screw terminals using #12 to #18 AWG
- High-sound output with low-current draw
- Available in color red or white front
- Applications: individual rooms, apartments, hotels / motels & offices
- **UL** Listed & **ULC** Listed;
FM, CSFM & NYCFD Approved

Specifications

- Notification appliance shall be a Siemens MH, or approved equal
- Notification appliance shall be electronic, and shall have field-selectable settings for Temporal (Code 3) or continuous horn and support coded-systems operation
- The anechoic – **ULC** only – sound pressure measurement on Temporal (Code 3) and Continuous Horn settings shall each be 87 dBA Anechoic minimum at 24VDC
- All models shall have provision for standard reverse polarity-type supervision and In / Out wiring using terminals that accept #12 to #18 AWG wiring
- The appliances shall be mounted indoors, and mount on standard, single-gang electrical back boxes requiring no additional trim plates or adapters
- All notification appliances shall be listed for “Special Applications”

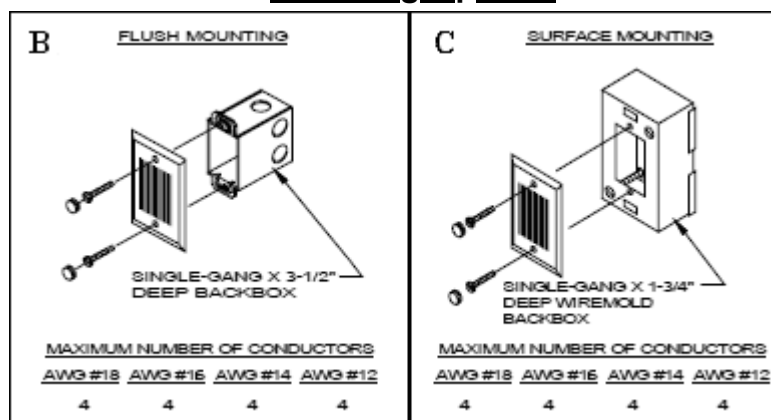
‘MH’ Series Notification Appliances 2575

Mounting Diagram



(Shown In Inches)

Mounting Options



Technical Data

Table 1: UL and ULC Listed Models and Ranges		
Model	Operating Voltage (Special Application) [Per UL 464] (VDC/VRMS)	Voltage Range [Per ULC-S525-99] (VDC/VRMS)
	MH*	16.0-33.0

* Available in red and white

Table 2: UL / ULC dBA Sound Output						
	Reverberant [Per UL 464 @ 10 Ft.]			Anechoic dBA [Per ULC-S525-99]		
	16.0 VDC	24.0 VDC	33.0 VDC	20.0 VDC	24.0 VDC	31.0 VDC
Continuous Horn	79	83	85	84	87	90
Code 3 Horn	75	78	81	84	87	89

Table 3A: ULC Current Ratings (AMPS) Rated Average Current		
20.0VDC		.024
24.0VDC		.025
31.0VDC		.026
20.0VRMS		.027
24.0VRMS		.038
31.0VRMS		.043

UL Current Ratings Maximum RMS Current (AMPS)		
DC	16.0-33.0VDC	0.026
FWR	16.0-33.0VRMS	0.043

Details for Ordering – (Including Mounting Options & Agency Approvals)

Model	Part Number	Description	Mounting Options*	Agency Approvals			
				UL	ULC	FM	CSFM
MH-R	500-636074	Mini Horn Appliance, Red	B,C	X	X	X	X
MH-W	500-636075	Mini Horn Appliance, White	B,C	X	X	X	X

X = listed / approved * = Refer to data sheet #: 2585 for detailed mounting options

Notice: This marketing data sheet is not intended to be used for system design or installation purposes. For the most up-to-date information, refer to each product's installation instructions.