



SK-MON-10

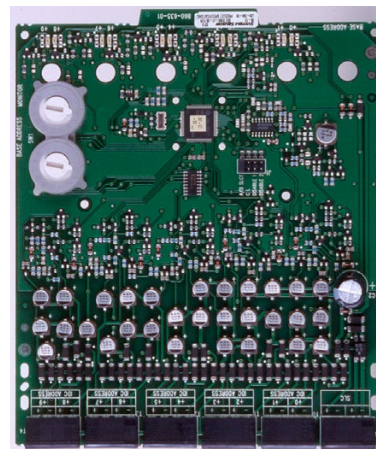
Intelligent Ten Input Monitor Module

The SK-MON-10 is a ten point addressable monitor module for use with Honeywell Silent Knight Series fire alarm control panels (FACPs). Each monitor module is intended to interface between a control panel and a normally open contact device. A common SLC input is used for all modules, and the initiating device loops share a common supervisory supply and ground. Otherwise, each monitor operates independently from the others, each module has its own address.

The SK-MON-10 supports ten Class B supervised contact inputs or five Class A supervised contact inputs. Conventional 4-wire smoke detectors can be monitored for alarm and trouble conditions.

INSTALLATION

You can install one or two SK-MON-10 modules in an accessory cabinet (PN IDP-ACB). The accessory cabinet has a built-in mounting plate that positions the module boards so that all of the status indicators are visible.



SK-MON-10

FEATURES & BENEFITS

- 10 contact monitor
- Support for Class A and Class B wiring
- Fully supervised
- LED indicator for each input
- Disable unused addresses
- Mount up to two modules in one accessory cabinet (PN IDP-ACB)
- Rotary address switches for fast installation
- Removable 12 to 18 AWG plug in terminal blocks for easy wiring and troubleshooting
- Mounting hardware included
- UL Listed

SK-MON-10 Technical Specifications

PHYSICAL

Height: 46.8"H x 5.8" W x 1.25"D (17.3 X 14.7 X 3cm)

Shipping Weight: 6.3 oz (196 g)

ELECTRICAL

Wire Gauge: 12-18

Operating Voltage: 15 – 32VDC

Standby Current: 3.5mA max

Initiating Device Circuit Wiring Resistance: 1500Ω max

Initiating Device Circuit Voltage: 10.2VDC max

Initiating Device Circuit Current: 240μA max

ENVIRONMENTAL

Operating Temperature: 32°F – 120°F (0°C – 49°C)

Humidity: 10% – 93% non-condensing

ORDERING INFORMATION

SK-Mon-10: 10 Input Monitoring Module

ACCESSORIES

IDP-ACB: SK Module Cabinet. 15.25" H x 12.5" W x 3"D

COMPATIBILITY

The SK-MONITOR is compatible with the following Honeywell Silent Knight fire alarm control panels:

6820: Addressable fire alarm control panel

6820EVS: Addressable fire alarm control panel with an emergency voice system.

6808: Addressable fire alarm control panel

6700: Addressable fire alarm control panel

5700: Addressable fire alarm control panel

5808: Addressable fire alarm control panel

5820XL: Addressable fire alarm control panel

5820XL-EVS: Addressable fire alarm control panel with an emergency voice system

For a complete listing of all compliance approvals and certifications, please visit www.silentknight.com.

Microsoft, Windows, and the Windows Logo are registered trademarks or trademarks of Microsoft Corporation.

Silent Knight®, System Sensor® and Honeywell® are registered trademarks of Honeywell International, Inc.

This document is not intended to be used for installation purposes. We try to keep our product information up-to-date and accurate. We cannot cover all specific applications or anticipate all requirements. All specifications are subject to change without notice.

For Technical Support, call 800-446-6444.

For more information

Learn more about Honeywell Silent Knight and other products by visiting www.silentknight.com

Honeywell Silent Knight

12 Clintonville Road
Northford, CT 06472
800-328-0103

Doc 350132 | Rev F | 11/17
© 2017 Honeywell International Inc.

