

Features

- Attractive, modern SlimLine design
- Hour/minutes/seconds hands
- 12 in. round model
- Individual automatic synchronization with hourly correction
- Microprocessor-based movement
- Simple setup and installation
- Easily maintained and serviced
- A 3510 Hz power line carrier receiver is included with each clock
- Double-dial round bracket (optional)

Description

Simplex electronic clocks can be used in many types of applications, from small offices to large-scale industrial sites. Clocks are available in round and square models with a 12 in. dial. Round clocks are also available with a 9 in. dial.

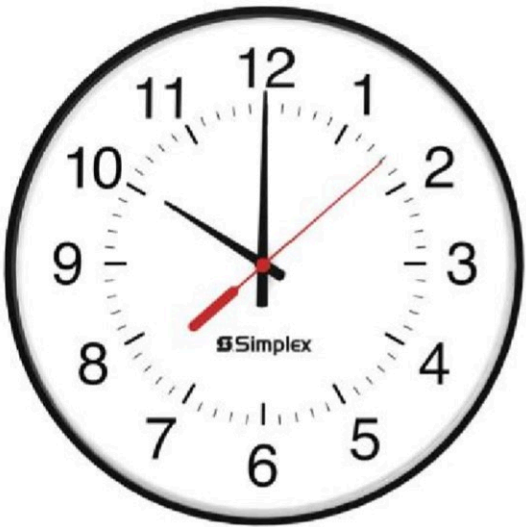
Each electronic clock uses a stepped second hand and provides the following capabilities:

- **Hourly correction**
Clocks are automatically synchronized with the Simplex Time Control Center every hour. This means clocks will display the correct system time after a power failure. Clocks that are up to 59 minutes slow or 55 seconds fast are corrected completely on the hour.
- **12-Hour correction**
Synchronization is provided for clocks that are up to 12 hours slow. This ensures that even the most prolonged power interruption in individual clocks, or in the complete system, will be compensated for automatically. Clocks that are up to 11 hours and 59 minutes slow are corrected every 12 hours.

Wiring

Wiring size and type varies greatly, depending on the correction type, voltage used, quantity of clocks, cable distance, local codes, and National Electrical Code Class I requirements. Your local Sales Representative is equipped to assist you with complete clock system design services and wiring specifications.

Figure 1: 6310-9122A



Specifications

Table 1: 6310-9122A Specifications

Specification	Details
Case material	ABS
Case color	Black
Dial	Symmetry
Crystal	Shatter-proof, side-molded, transparent polycarbonate
Power requirements	120 VAC, 60 Hz nominal (102 VAC to 132 VAC)
Average current consumption	25 mA @ 24 VDC/VAC
Hand tolerance	Minute hand: ± 15 sec.
Temperature range	32°F to 113°F (0°C to 45°C)

* Additional listings may be applicable; contact your local Simplex product supplier for the latest status.

Mounting

You can use the Simplex 6310-9122A and 6310-9123A electronic clocks for service replacement of previously installed Simplex 2310/6310 3510 Hz electronic clocks.

Table 2: Mounting specifications

PID	Mounting type	Dimensions	Operating voltage	Case color	Dial face	Power connector
6310-9122A	Slim line	12 in. round	110V / 60 Hz	Black	Symmetry	3-prong
6310-9123A	Slim line	12 in. round	110V / 60 Hz	Black	Symmetry	Molex

Semi-flush mounting:

A previously installed 12 in. Simplex semi-flush 3510 Hz electronic clock may have been mounted using a 2975-9038 or 2975-9040 Back box, see [Figure 2](#) and [Figure 3](#).

To replace these semi-flush clocks with a Simplex 6310-9123A electronic clock, attach the clock mounting hanger and connector assembly (included) to the 6310-9123A replacement clock according to the instructions provided. Attach the connector to the receptacle plug as described in the installation instructions and hang the clock onto the back box.

Figure 2: Back box mounting

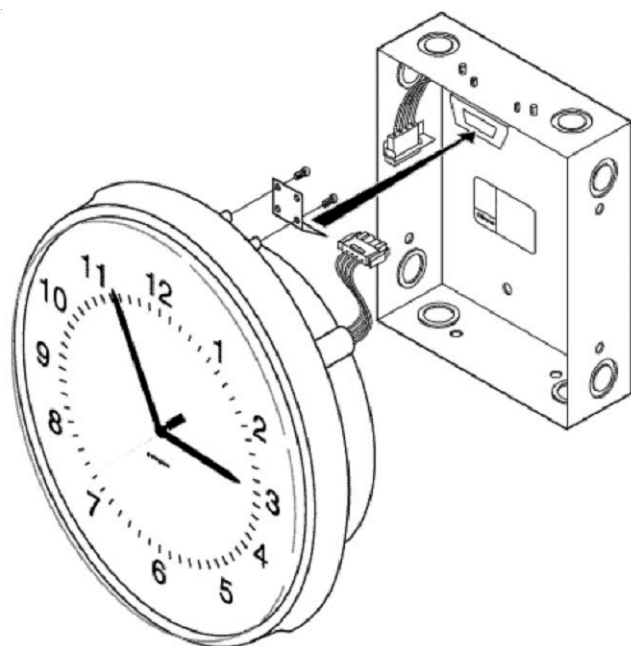


Figure 3: Back box dimensions

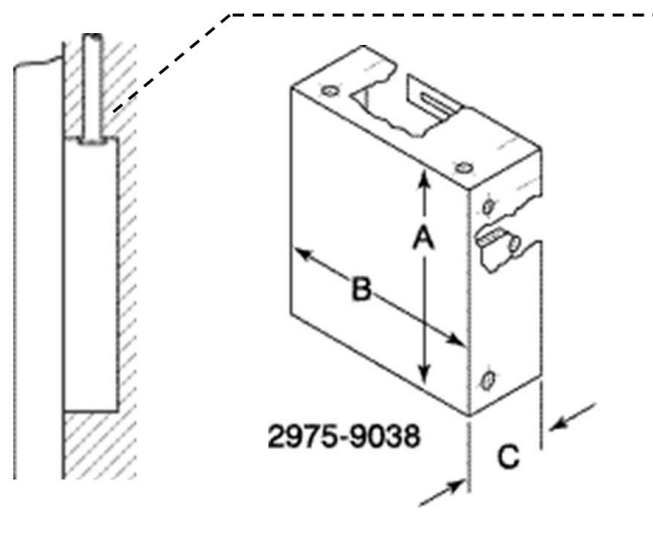


Table 3: Semi-flush clock details

Type	Old number	A	B	C	Clock
2975-9038	5928	9 1/8 in. (23.1 cm)	8 1/8 in. (20.6 cm)	2 5/16 in. (5.8 cm)	12 in. round semi-flush
2975-9040	5929	9 1/8 in. (23.1 cm)	8 1/8 in. (20.6 cm)	3 5/8 in. (9.1 cm)	12 in. round semi-flush

Double-dial mounting:

The Simplex 6310-9122A electronic clock is **not** compatible with existing Simplex 2310-9810 or 2310-9814 Double-dial brackets. To double-dial mount Simplex 6310-9122A, a JAH-1BD-12R-0 Double Mount Housing for SlimLine 12 in. Round Analog Clock is required.

Flag mounting:

To install the 6310-9122A electronic clock in a single-side, flag-style ceiling or wall the following are required:

- JAB-1BD-00S-0 Double Mount Housing for Slim Line 12 in. Round Analog Clock, plus one
- A-SLM-MOUNT-12S-0 Mounting Rings

See [Figure 4](#), [Figure 5](#) and [Table 4](#) for flag mounting dimension requirements.

Figure 4: SlimeLine 12 in. Round Analog Clock

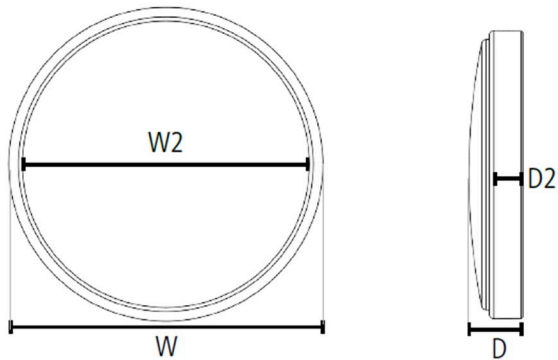


Figure 5: Double/ Dual mount with adjustable pole

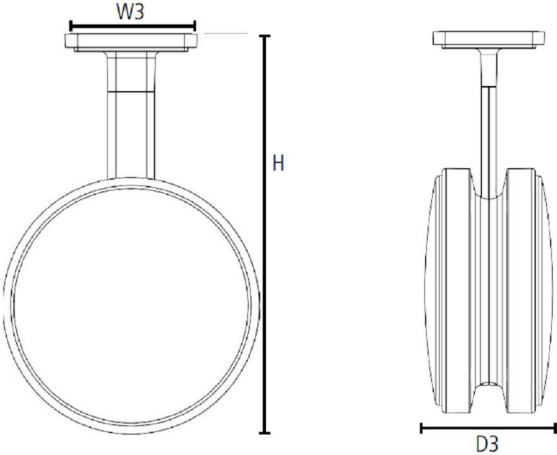


Table 4: Flag mounting dimension requirements

Dimension	Callout	Value
SlimLine 12 in. clock	W	12.9 in. (32.7 cm)
	W2	12.6 in. (32.0 cm)
	D	2.4 in. (6.2 cm)
	D2	1.7 in. (4.3 cm)
Double/Dual mount dimensions	W3	6.6 in. (16.7 cm)
	D3	6.4 in. (16.2 cm)
Adjustable pole height	H	19.7 in. (50.2 cm)
		18.1 in. (46.1 cm)
		16.5 in. (41.9 cm)
Shipping weight		2 lb (0.9 kg)