

**Features**

**End-of-Line Voltage Monitor Relay provides isolated monitoring of operating voltage:**

- For use with 4-wire detectors and similar fire alarm system products
- Model 2098-9735 operates at 24 VDC
- Model 2098-9736 operates at 120 VAC (not ULC listed)
- Relay contact provides continuity to end-of-line supervision while energized, loss of power opens supervisory path causing a trouble condition at the monitoring panel
- UL listed to Standard 864

**Stainless steel cover plate allows convenient mounting for easy location:**

- Mounts in single gang box, 2" (51 mm) deep
- Easy to locate for convenient access



End-of-Line Relay Cover Plate

**Description**

Simplex® end-of-line relays provide zone voltage monitoring mounted on a single gang plate for easy access. Upon loss of voltage, the relay contact opens, breaking continuity to the end-of-line zone wiring supervision resistor.

Refer to data sheet S4081-0003 for 4081 Series End-of-line Resistor Harnesses.

Refer to data sheet S4098-0015 for reference to model 2098-9839, encapsulated 24 VDC end-of-line relay.

\* NOTE: ULC listing is applicable to model 2098-9735, 24 VDC only. This product has been approved by the California State Fire Marshal (CSFM) pursuant to Section 13144.1 of the California Health and Safety Code. See CSFM Listing 7300-0026:013 for allowable values and/or conditions concerning material presented in this document. It is subject to re-examination, revision, and possible cancellation. This product was not FM or MEA (NYC) approved as of document revision date. Additional listings may be applicable; contact your local Simplex product supplier for the latest status. Listings and approvals under Simplex Time Recorder Co. are the property of Tyco Safety Products Westminster.

**Specifications**

**Common Specifications**

Contact Rating	3 A resistive @ 24 VDC/120VAC
Electrical Box Requirements	Single Gang, 2" (51 mm) minimum depth
Wiring	Color coded wire leads, 18 AWG (0.82 mm <sup>2</sup> )

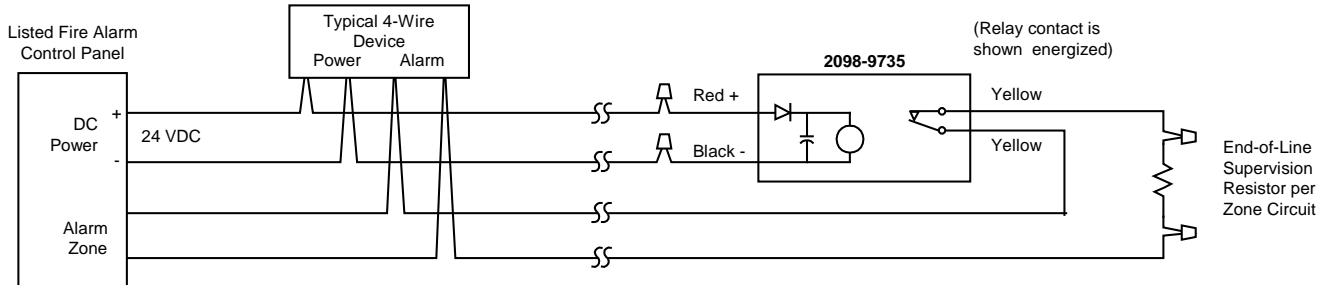
**2098-9735, 24 VDC Nominal Operation**

Input Voltage	20 to 31 VDC
Dropout Voltage	Typical = 5 VDC, must dropout at 3 VDC
Input Current	22 mA maximum @ 31 VDC

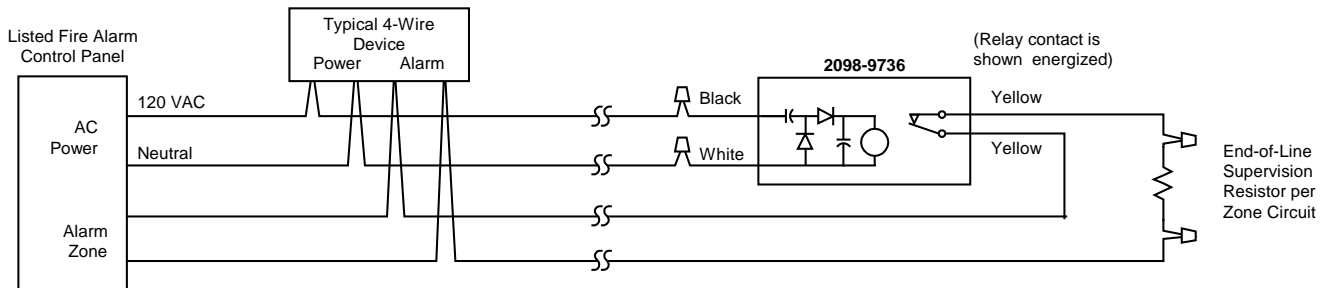
**2098-9736, 120 VAC Nominal Operation**

Input Voltage	102 to 132 VAC
Dropout Voltage	Typical = 30 VAC, must dropout at 10 VAC
Input Current	40 mA maximum @ 132 VAC

**Typical 4-Wire Zone, 24 VDC Devices**  
(refer to specific devices for exact wiring)



**Typical 4-Wire Zone, 120 VAC Devices**  
(refer to specific devices for exact wiring)



Tyco is a registered trademark of Tyco International Services GMBH and is used under license. Simplex, and the Simplex logo are trademarks of Tyco International Ltd. and its affiliates and are used under license.