

Addressable Beam Smoke Detector

IDP-Beam & IDP-Beam-T

The IDP-Beam and IDP-Beam-T are addressable beam smoke detectors for use with Farenhyt Series fire alarm control panels (FACPs). They are uniquely suited for protecting open areas with high ceilings where other methods of smoke detection are difficult to install and maintain. The IDP-Beam-T also includes an integrated sensitivity test feature.

Installation of the single-ended reflective design is much easier than dual ended projected beam detectors. Alignment is quickly accomplished using an optical sight and a two-digit signal strength meter incorporated into the IDP-Beam and IDP-Beam-T.

Listed for operation from -22°F to 131°F (-30°C to 55°C), the IDP-Beam and IDP-Beam-T can be used in applications to provide early warning in environments where temperature extremes exceed the capability of other types of smoke detectors.

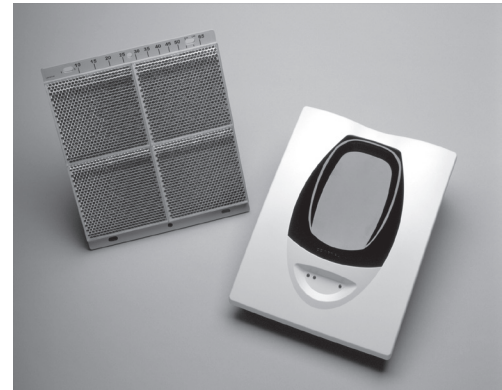
The IDP-Beam and IDP-Beam-T consist of a transmitter/receiver unit and a reflector. When smoke enters the area between the unit and the reflector it causes a reduction in the signal. When the smoke level reaches the predetermined threshold, an alarm is activated.

These beam smoke detectors have four sensitivity selections along with two Acclimate settings. When either of the two Acclimate settings are selected, the detector will automatically adjust its sensitivity using advanced software algorithms to select the optimum sensitivity for the specific environment.

The IDP-Beam-T is equipped with an integral sensitivity test feature that consists of a test filter attached to a servo motor inside the detector optics.

FEATURES & BENEFITS

- 16 to 328 foot protection range
- Single-ended, reflective design
- User friendly alignment procedure
- Six user selectable sensitivity levels
- Optional integral NFPA 72 sensitivity test feature
- Removable plug-in terminal blocks
- Digital display for easy alignment
- Built-in automatic gain control compensates for signal deterioration from dust build-up
- Optional remote test station
- Rotary address switches for fast installation
- Paintable cover
- UL Listed
- CSFM Listed
- MEA Listed 95-01-E Vol. II



IDP-BEAM

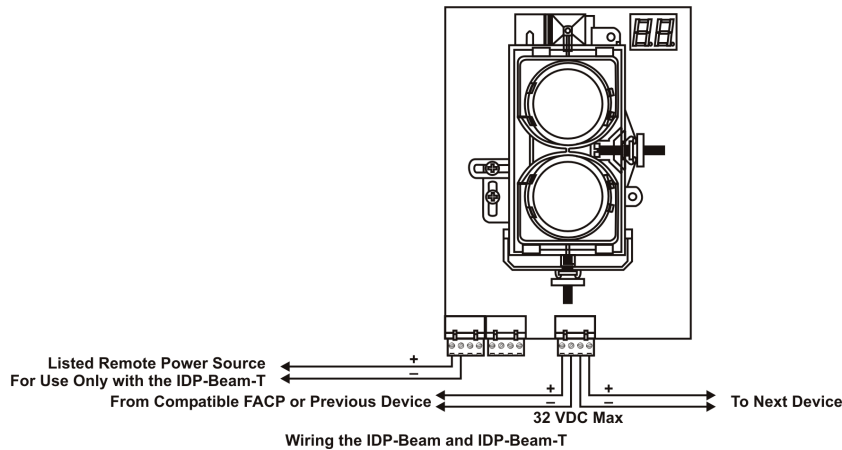
Using the remote test station, (System Sensor® PN RTS451), the motor is activated and moves the filter in the pathway of the light beam, which tests the detector sensitivity. This integral sensitivity test feature allows the user to quickly and easily meet the annual maintenance and test requirements of NFPA 72.

COMPATIBILITY

The IDP-Acclimate is compatible with the following Farenhyt Series FACPs:

- IFP-2100 / IFP-2100ECS / RFP-2100
- IFP-2000 / IFP-2000ECS / RPS-2000
- IFP-1000 / IFP-1000ECS
- IFP-300 / IFP-300ECS
- IFP-100 / IFP-100ECS
- IFP-75
- IFP-50

IDP-Beam and IDP-Beam-T Technical Specifications



For a complete listing of all compliance approvals and certifications, please visit www.farenhyt.com.

Microsoft, Windows, and the Windows Logo are registered trademarks or trademarks of Microsoft Corporation.

Honeywell® and System Sensor® are registered trademarks of and Farenhyt™ is a trademark of Honeywell International, Inc.

This document is not intended to be used for installation purposes. We try to keep our product information up-to-date and accurate. We cannot cover all specific applications or anticipate all requirements. All specifications are subject to change without notice.

For Technical Support, Please call 800-446-6444.

SPECIFICATIONS*

OPERATING

Protection Range: 16' – 328' (5 – 100 m)

Adjustment Angle: +/-10° horizontal & vertical (optics move independent of the unit)

Sensitivity Levels: Level 1–25%; Level 2–30%; Level 3–40%; Level 4–50%; Acclimate Level 1–30 to 50%; Acclimate Level 2–40 to 50%

Fault Condition (Trouble): 96% or more obscuration blockage in alignment mode; improper alignment; self-compensation limit reached

Alignment Aid: Optical gunsight; integral signal strength indication; 2-digit display

LEDs: Normal–flashing green; Yellow–trouble; Red–alarm

Test/Rest Feature: Integral sensitivity test filter (IDP-Beam-T only); sensitivity filter (incremental scale on reflector); local test switch; local reset switch; remote test and reset switch (compatible with RTS151 and RTS151KEY test station)

PHYSICAL

Detector: 10" H x 7.5" W x 3.3" D (25.4 x 19.1 x 8.4 cm)

Reflector for 16' – 230': 7.9" H (20 cm) x 9.1" W (23 cm)

Reflector for Beyond 230': 15.7" H (40 cm) x 18.1" W (46 cm)

Shipping Weight: 3.9 lbs (1.8 kg)

ENVIRONMENTAL

Operating Temperature: 32°-100°F (0°C–38°C)

Humidity: 10 to 93% non-condensing)

For more information

Learn more about Honeywell's Farenhyt Series and other products available by visiting www.farenhyt.com

Honeywell Security & Fire

12 Clintonville Road
Northford, CT 06472
800-328-0103

ELECTRICAL RATINGS

Operating Voltage: 15 – 32VDC

SLC Standby and Alarm Current: 300µA @ 24VDC (one communication every 5 sec with LED enabled)

LED Current: 6.5mA @ 24VDC max (when on)

OTHER RATINGS

Thermal: Fixed Temperature Setpoint 135°F (57°C)

Velocity: 0 – 4000 fpm (0 – 6.1 m/sec)

Insect Screen Hole Size: 0.025" (0.64 mm) nominal

ORDERING INFORMATION

IDP-Acclimate: Multicriteria Photoelectric Smoke Detector

ACCESSORIES

RA100Z: Remote LED annunciator.

XR2B: Detector removal tool. A removal and replacement tool for IDP plug-in detectors. Includes the T55-127-000.

M02-04-01: Detector test magnet

M02-09-00: Telescoping test magnet

XP-4: Extension pole for XR2B. Extends from 5 – 15 ft.

T55-127-000: Detector removal head.

BCK-200B: Black detector kit. For IDP-series detectors.

* Unless otherwise noted, specifications apply to IDP-Photo and IDP-Photo