



## Description

The QX-MINI is an emergency and fire alarm audio system designed to provide notification for small to medium applications. The QX-MINI supplies 30 W for audio output and 5 A for Notification Appliance Circuits (NAC). The optional 30-Watt Amplifier Module (QAD-30) increases audio output to 60 W.

The applications for this distributed audio system, ranges from small to mid-sized facilities such as: clinic and nursing homes, churches, schools, mid-sized buildings, factories, etc.

The QX-MINI operates either as a stand-alone audio system or as part of a fire alarm system. The QX-MINI can connect to any UL-listed fire alarm control unit (FACU), through supervised inputs or NACs. Mircom's addressable FACUs can control the QX-MINI using the SLC loop.

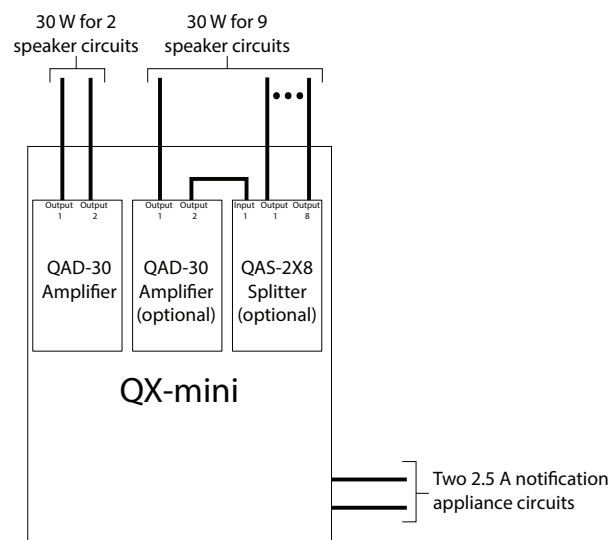
Optional Booster Panels (QX-MINI-BP) provide support for a distributed system. All Inputs, Microphones and User interfaces are disabled on Booster Panels, and they cannot be programmed through the configuration software. A maximum of five QX-MINI-BP can be connected to a QX-MINI.

One splitter (QAS-2X8) and one secondary amplifier (QAD-30) can be added to each QX-MINI or QX-MINI-BP. When adding the QAS-2X8 to QX-MINI or QX-MINI-BP that has two amplifiers, the secondary QAD-30 output speaker circuit can go to one QAS-2X8 input and the primary amplifier keeps both outputs untouched. In this case QX-MINI or QX-MINI-BP will have 11 (9+2) channels.

Note: QX-MINI has been investigated in accordance with UL864, 10th edition, and ULC S527.

## Features

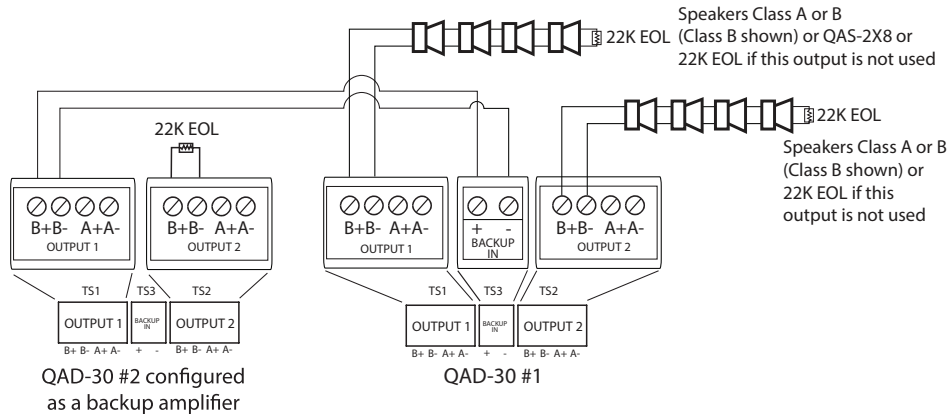
- Utilize as a standalone audio system or integrate with a fire alarm system
- Integrates with Mircom's addressable fire alarm control units (FACU) through the SLC loop
- Ability to connect to any UL-listed FACU through two available supervised inputs (1st Stage & 2nd Stage) or NACs
- Supports multiple intelligent input activation protocols: MGC Protocol & CLIP
- Low Frequency (LF) signalling for speakers available through Mircom SP Series, MGC SPP/SPPS Series and other branded compatible speakers
- Each QX-MINI or QX-MINI-BP delivers up to 60 Watts (Two QAD-30 amplifiers) and expandable to 360 W for a system composing of one QX-MINI Master and Five Booster Panels
- Each QAD-30 provides two Class A or Class B speaker circuits, field selectable for 25 or 70 V of audio output
- Two Class A or Class B NAC outputs available on each QX-MINI/ QX-MINI-BP, rated at 2.5A regulated 24V
- Ability to synchronize signal on QX-MINI NACs with connected FACU NAC & extend synchronization signal to booster panel (QX-MINI-BP) circuits
- Comes with standard digital messages for fire, emergency, evacuation, weather, and all clear
- Select from up to 14 digital messages at the panel and store up to 12 minutes of audio messages. Additionally, create custom messages and upload using the configurator
- Capable of creating up to 30 zones, and correlating devices to zones to comply with local AHJ requirements, such as activating speakers on "floor above and floor below"
- Supports up to 6 remote microphones and/or LOCs
- Master microphone input with push-to-talk (PTT)
- Battery backup (up to 18 Ah in cabinet and up to 75 Ah with a separate battery cabinet)
- Dedicated Trouble, AC Fail, and Alarm relay outputs



# Use Cases for New/Retrofit Installations:

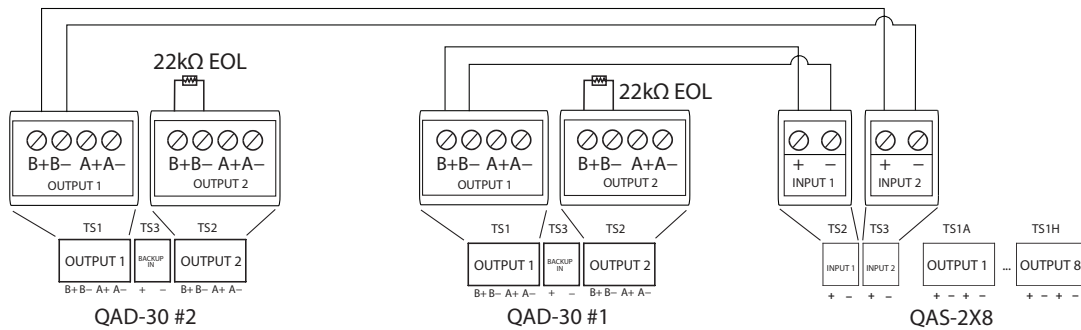
## A. Utilize Second Amplifier as Backup

- When there are 2 amplifiers installed, one of them can be configured as a backup. If the main amplifier fails, the backup amplifier will control the speakers that are wired to the main amplifier.



## B. Drive Two Separate Audio Messages in a Single Panel

- Can be utilized when connecting two amplifiers to the input of the audio zone splitter for an application where each amplifier plays a different audio message.
- For example, one amplifier can provide an alarm signal to a zone, and the other amplifier can provide an alert signal to the other zones

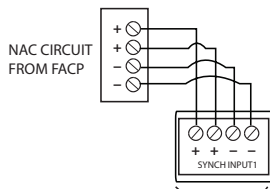


## C. Synchronization Between FACU and QX-MINI NACs

- In this application, the two NACs on the QX-MINI are synchronized with the NAC from the FACU. The QX-MINI Sync Inputs are supervised by the FACU and provide activation and synchronization.

### CLASS A

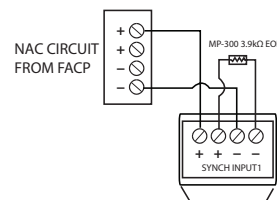
SYNCH SIGNAL FROM FACP



TS16	TS10	TS5	TS4	TS3	TS17	TS6	TS1	TS14	TS9	TS11	TS12	TS13	TS7	TS8
RMIC AUDIO	RELAY IN	ALARM	AC TBL	COM TBL	RMIC RS-485 OUT	RS-485 IN	RS-485 AUX 24V	SLC	SYNCH INPUT 1	SYNCH INPUT 2	SYNCH OUTPUT	NAC 1	NAC 2	
+ 5	- 1	+ 2	NO NCC	NO NCC	NO NCC	+ 3	+ 5	+ 5	+ 1	+ 2	+ 1	+ 2	+ 1	+ 2

### CLASS B

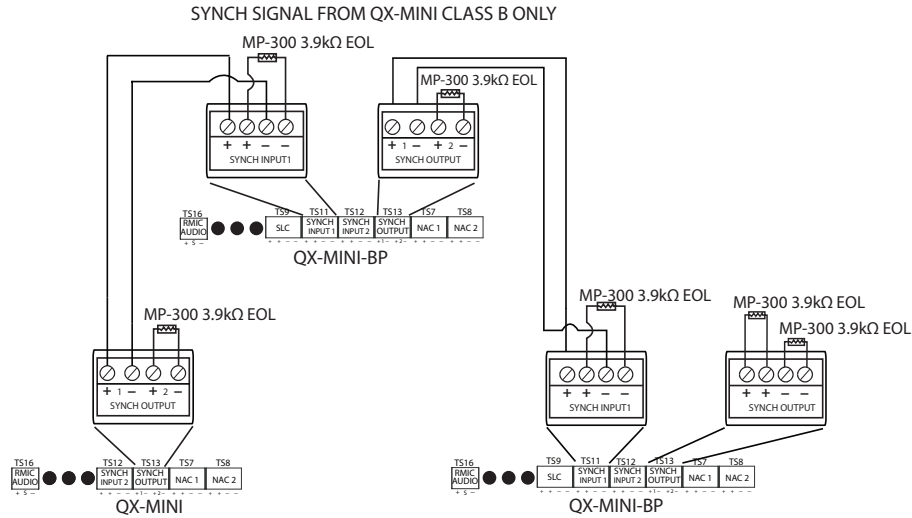
SYNCH SIGNAL FROM FACP



TS16	TS10	TS5	TS4	TS3	TS17	TS6	TS1	TS14	TS9	TS11	TS12	TS13	TS7	TS8
RMIC AUDIO	RELAY IN	ALARM	AC TBL	COM TBL	RMIC RS-485 OUT	RS-485 IN	RS-485 AUX 24V	SLC	SYNCH INPUT 1	SYNCH INPUT 2	SYNCH OUTPUT	NAC 1	NAC 2	
+ 5	- 1	+ 2	NO NCC	NO NCC	NO NCC	+ 3	+ 5	+ 5	+ 1	+ 2	+ 1	+ 2	+ 1	+ 2

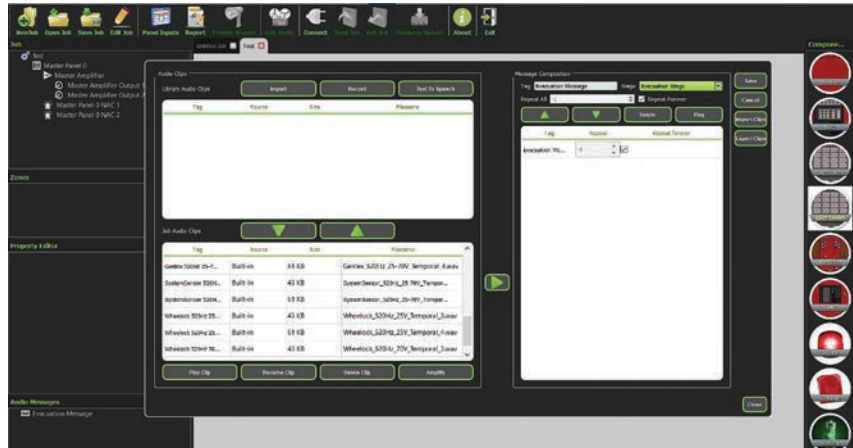
## D. Synchronization Between Multiple QX-MINI-BP

- Inter-panel synchronization can be achieved (maximum of four units) within the distributed QX-MINI system
- Please note that to synchronize signals from the QX-MINI, Class B wiring can only be used

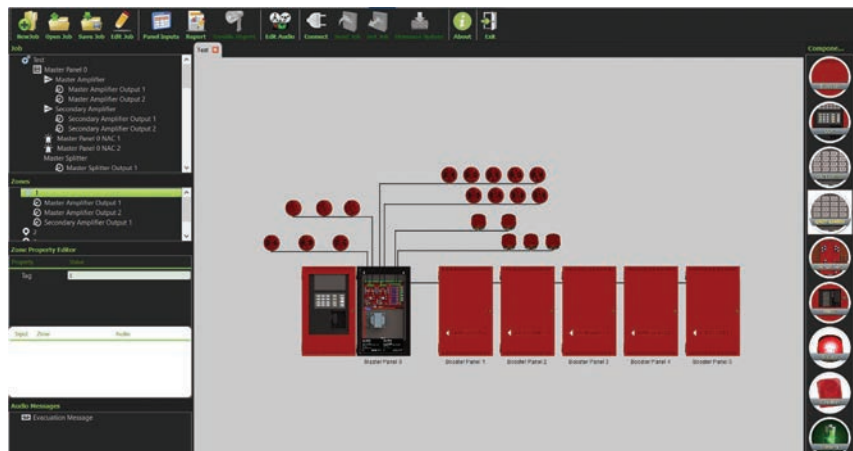


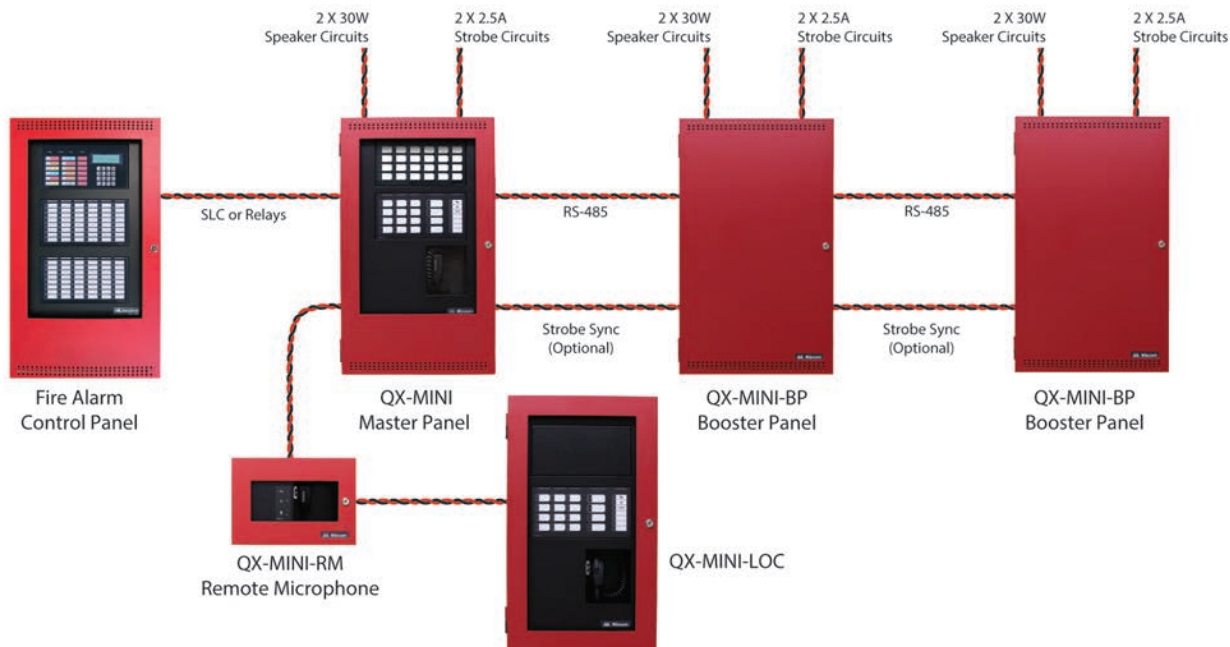
## E. Drive Low Frequency Signal through Speakers/Speaker-Strobes

- With this option, retrofit applications can use the QX-MINI for complying with latest Low Frequency (LF) code requirements across their respective jurisdictions
- The QX-MINI provides the ability to drive Low Frequency waveforms through compatible speakers and speaker/strobes



- Utilize a simple and easy to use graphical interface on the QX-MINI configurator
- Convenient user experience with features such as drag and drop of modules, and visual representation of correlations through zone activated/deactivated option





Example audio system with a FACP, a QX-MINI Master Panel, two Booster Panels, and two Remote Microphones.

## Specifications

<b>Dimensions</b>	
26"H x 14.5"W x 4.2"D	
<b>AC Line Voltage</b>	
120V @ 60Hz / 240V @ 50Hz (3.1 Amps / 1.57 Amp)	
<b>Output</b>	
30W audio (60W max.) and 2 X 2.5A NAC (5A max.)	
<b>Battery</b>	
24VDC, Gel-Cell/Sealed Lead-Acid	
<b>Charging Capability</b>	
Up to 75AH charge capacity	
<b>Current Consumption</b>	
Standby: 215mA	Alarm: 220mA

<b>Indicators</b>	
AC Power	Alarm Active
Ground Fault	Pretone Active
CPU Fault	Page Ready
Message Active	
<b>Controls</b>	
Zone Select (4)	Selection Reset
Message Select (8)	Lamp Test
All Call	Trouble Silence
<b>Compatibility</b>	
UL/ULC listed Fire Alarm Control Panels	

## Ordering Information

Model	Description
QX-MINI	Master Panel: Microphone, Main Display, Main Board, 1 x 30W Amplifier, Deadfront, Red Door, Backbox, Back Plate, Transformer
QX-MINI-BP	Booster Panel: Outer Red Door, Main Board (acting in slave mode), 1 x 30W Amplifier, Backbox, Back Plate, Transformer
QX-MINI-RM	Remote Microphone: Backbox, Red Door, Microphone, RMIC PCB
QX-MINI-LOC	Local Operating Console: Main Display, Microphone, RMIC PCB, Deadfront, Backbox, Red Door
QAD-30	30 Watt Amplifier Module
QAZT-5302DS	24 Zone Controller
QAS-2X8	Audio Amplifier Splitter



### Canada

25 Interchange Way Vaughan, ON L4K 5W3  
Telephone: (905) 660-4655 | Fax: (905) 660-4113

### U.S.A.

4575 Witmer Industrial Estates Niagara Falls, NY 14305  
Toll Free: (888) 660-4655 | Fax Toll Free: (888) 660-4113